

**QUIET VALLEY**  
**LIVING HISTORICAL FARM**

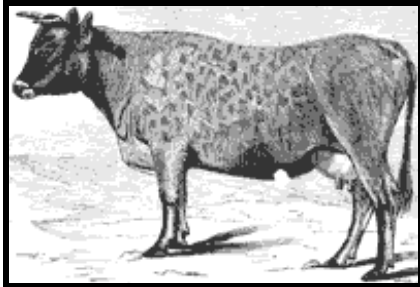


**Field Trip Workbook**

© Quiet Valley Living Historical Farm

**Identify how these important farm animals are used:**

**Cow:**



---

---

---

---

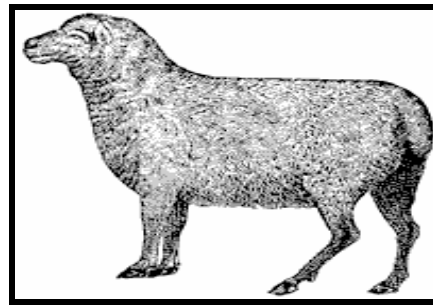
**Sheep:**

---

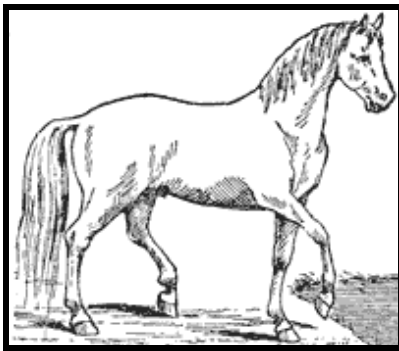
---

---

---



**Horse:**



---

---

---

---

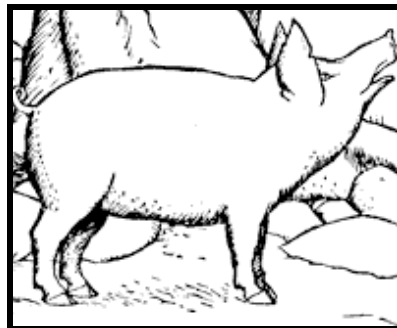
**Pig :**

---

---

---

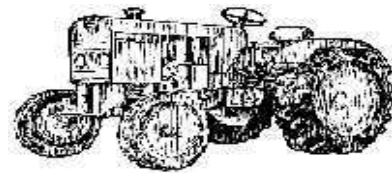
---



**How has farming changed in two hundred years?**



**Versus**



---

---

---

---

---

---

---

---

**Are there machines today that are similar to ones you saw at Quiet Valley? List them below.**

---

---

---

---

---

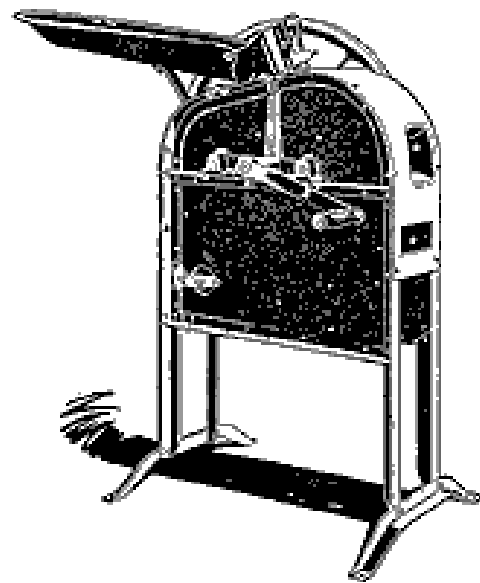
---

---

---

---

---



**Corn Sheller**

**Many farmers grow large gardens. Most of the food we buy is grown by farmers. Brainstorm food that might be grown on a farm. Write the words in the box below.**



**Choose one of the foods from above.  
Write a paragraph to describe how it goes from seed to your table.**

---

---

---

---

---

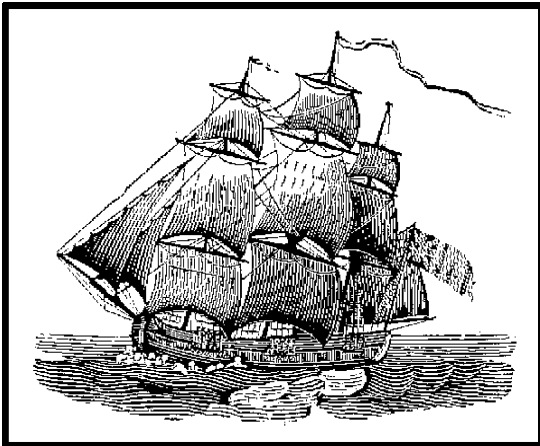
---

---

---

---

---



**Quiet Valley's original settlers came to America from Germany over 200 years ago!**

**What challenges do you think they encountered in their new country?**

---

---

---

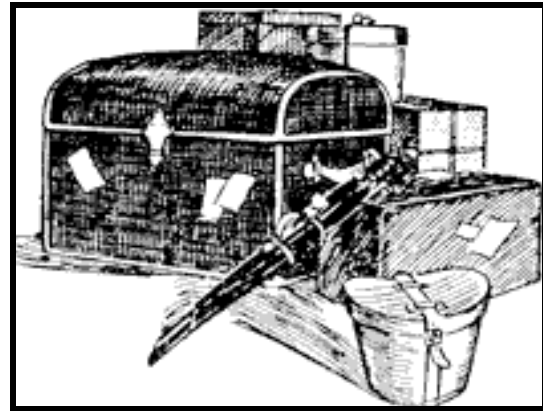
---

---

---

**Quiet Valley's original settlers could only bring a few items with them to their new home.**

**What things do you think they brought and what items would you bring?**



**Settlers**

**You**

<hr/>	<hr/>
<hr/>	<hr/>
<hr/>	<hr/>
<hr/>	<hr/>



**Children at Quiet Valley were needed to do chores to keep the farm working smoothly.**

**Describe how your life is different from the lives of children who lived at Quiet Valley.**

---

---

---

---

---

---

---

---

---

---

---

---

---

---

---

---

---

---

---

---

---

---

---

---

**Thank you for visiting Quiet Valley! We hope to see you again!**

